

# Lake Breezes

Lake Rescue Association, P.O.Box 372, Ludlow, VT 05149  
www.lakerescue.org

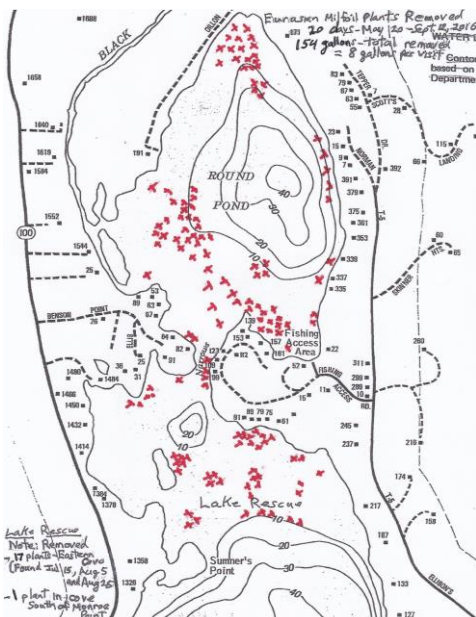
October 2017

## Milfoil Update

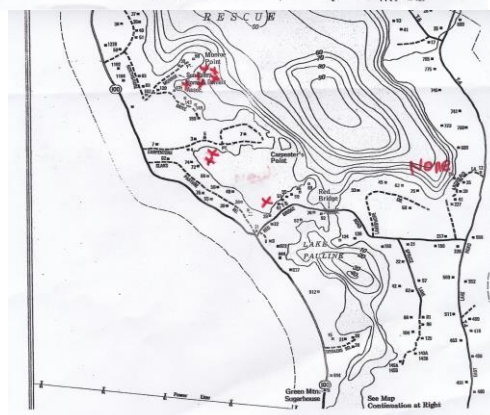
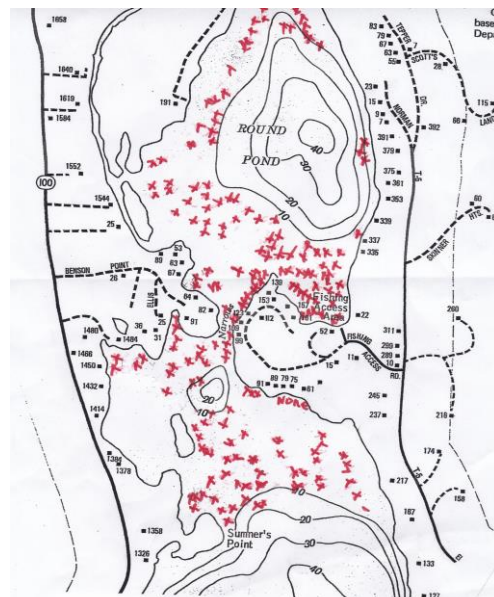
Our divers, Cat and Shane Yoder, visited our lakes 31 times this summer at a cost of over \$15,000. During these visits they hand pulled approximately 1,000 milfoil plants with their roots and placed them in mesh bags. Most of the milfoil plants pulled in 2017 were young first year growth plants that became visible during the summer. The milfoil plants spread through a root system and also from fragments that float downstream or are attached to boats or their propellers. The fact that the plants spread so easily, coupled with a growth rate of a foot a week in the hot summer months makes this plant extremely invasive if left unchecked. The hand pulling and mesh bagging system used by the Yoders is the best method to contain the spread of milfoil. There were no dense patches nor multi-stalked second-year plants found. Most of the plants found were young and growing sparsely. As you can see on the maps, there are many more places where milfoil has spread to this year. Conversely, in a couple of cases milfoil was

not found where it had been last year. By employing the divers for the last three years, we have contained the spread of thick milfoil and our lake is not choked with weeds. It is akin to a chronic disease which cannot be 'cured' once it is in the system. Only continued vigilance and removal of new growth can hold the milfoil at bay.

For more on this...See page 3.



2016



2017

## Winter Ice Safety

Every year at this time we like to remind our neighbors about important things to keep in mind while enjoying the lake in the winter months. Some enjoy snowmobiling but many more enjoy walking, snowshoeing and cross country skiing on the lake. Whatever you fancy here are some suggestions to stay *safer* on the lake:

- Always go on the frozen lake with a buddy. The ice is unpredictable.
- Take your cell phone along and let other know where you are going. Call 911 in case of emergency.
- Beware of ice covered with snow. Snow can insulate ice and keep it from freezing. Snow can hide cracks as well as weak ice and open water.
- Be especially wary at the beginning and end of the season.
- If local ice fishermen are out on the ice, it is a good indication that the ice is thick enough *in the areas where they are*.
- Know where streams enter the lake. Ice formed over flowing water is generally weaker than ice over still water. There is a stream located in the SE cove at the Killian property, one in the northern corner of Slack's Pasture cove and one to the left of the Gutner property.
- Always keep pets on a leash. If a pet falls through the ice, do not attempt a rescue - go for help. If the ice won't hold your dog's weight, it won't hold yours!
- Consider wearing a PFD under your winter gear.
- Wear appropriate footwear. Crampons can be purchased which add spikes or cables to your footwear... similar to tire chains.
- Carry a length of nylon rope to throw to your buddy.
- Be aware that there are two 'bubbler systems' on Lake Rescue, one in Round Pond and one in the southeastern cove of the main lake. There is also a bubbler on Lake Pauline, across and north of the

Sugar House. The areas around these bubbler systems will have weaker ice for an *unknown distance* around them.

- Carry Celsius Ice Escape Spikes. This device can be bought for \$5 from Amazon or Walmart.com.



In the event of falling through the ice, they can be used to climb back out onto the ice. Carry the spikes in a pocket where you can easily get to them.

This may seem like a cumbersome 'to-do' list, but this kind of an accident CAN AND HAS HAPPENED ON OUR LAKE. Two winters ago, one of our members, Liz Spaulding, fell through the ice while walking her dog. Fortunately, she made it to shore by breaking the weak ice with her spikes and then eventually 'wading' out. Needless to say, it was a traumatic experience!

Therefore:

The position of the LRA  
(and the State of Vermont)  
has always been

**NO ICE IS SAFE ICE**

**GO OUT THERE AT YOUR OWN RISK!**

## Looking Forward in our Battle with Milfoil

In 2016, we spent \$11,500 on our milfoil divers and we able to recoup \$7,580 from the State. In 2017, we spent \$15,130 and got back \$6,100. There are now 65 lakes in Vermont with milfoil and we are all competing for scarce state funding to deal with this destructive weed. So far, we are staying ahead of it. But you can see from this year's map how the milfoil has spread even with careful monitoring and removal. It is safe to say that we will be needing to hire divers for years into the future, with uncertain financial support from the State. Our dues have been covering the shortfall so far, but just barely. Your donations have been a huge help and will continue to be a vital part of our long-term plan.

### In Other News ...

- 
- The LRA will create a leaflet for you to print and hand out to your renters in the summer. The information will include customs on the lake, such as safety rules and counter clockwise traffic pattern. Copies of the leaflet will also be available at the Sugar House.
  - The State will be purchasing portable washers to spray clean boats at boat launches. We hope to be one of the lakes selected for such a system.



**Lake Rescue Association**

P.O. Box 372  
Ludlow, VT 05149

**Website:**

[www.LakeRescue.org](http://www.LakeRescue.org)

**Promoting Water Safety,  
Environmental Education  
&  
Improved Water Quality**

---

*We're on Facebook!*

*Visit our Group Page:*

Lake Rescue Association

---

**Board of Directors**

Email: [lakerescueassn@gmail.com](mailto:lakerescueassn@gmail.com)

M.R. Batesole

Harry Butts

Ann Rose

Barbara Silver

Natalie Fisher

Mike O'Neil

William Vanneman

Frank Wingate

Bruce Zanca

-----

The Lake Rescue Association is a 501c3  
Non-Profit organization. All donations to  
the 'Lake Restoration & Preservation' fund  
are  
tax-deductible.

Lake Rescue Assn.  
P.O. Box 372  
Ludlow, VT 05149

