

2023 Lake Rescue Association

LRA Annual Meeting

Ludlow Town Hall

August 5, 2023 Discussion DR4270 Flood

Presented by: Todd Menees, P.E.

River Management Engineer

ANR DEC Rivers Program, Montpelier, VT

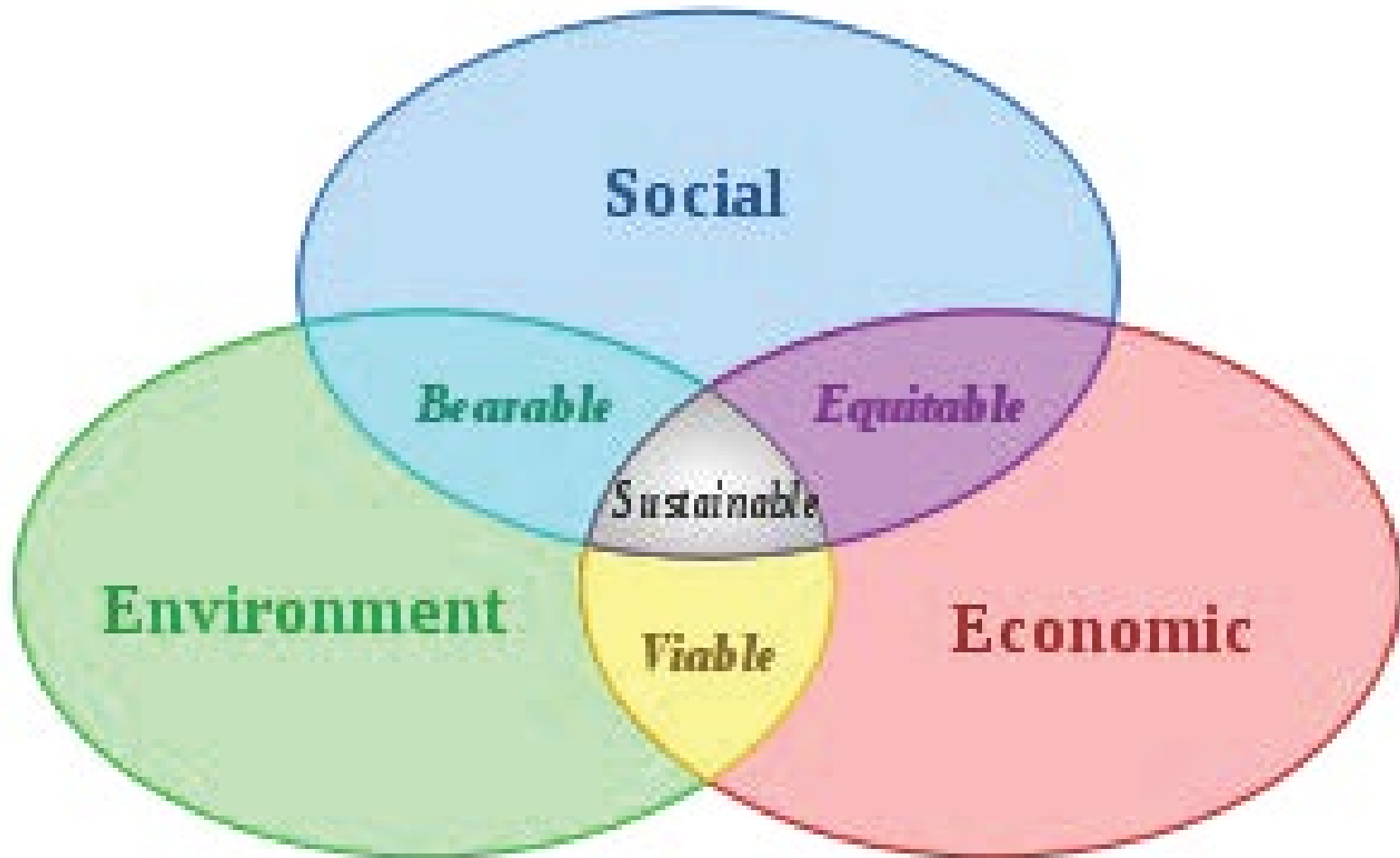
(802) 345-3510 todd.menees@vermont.gov



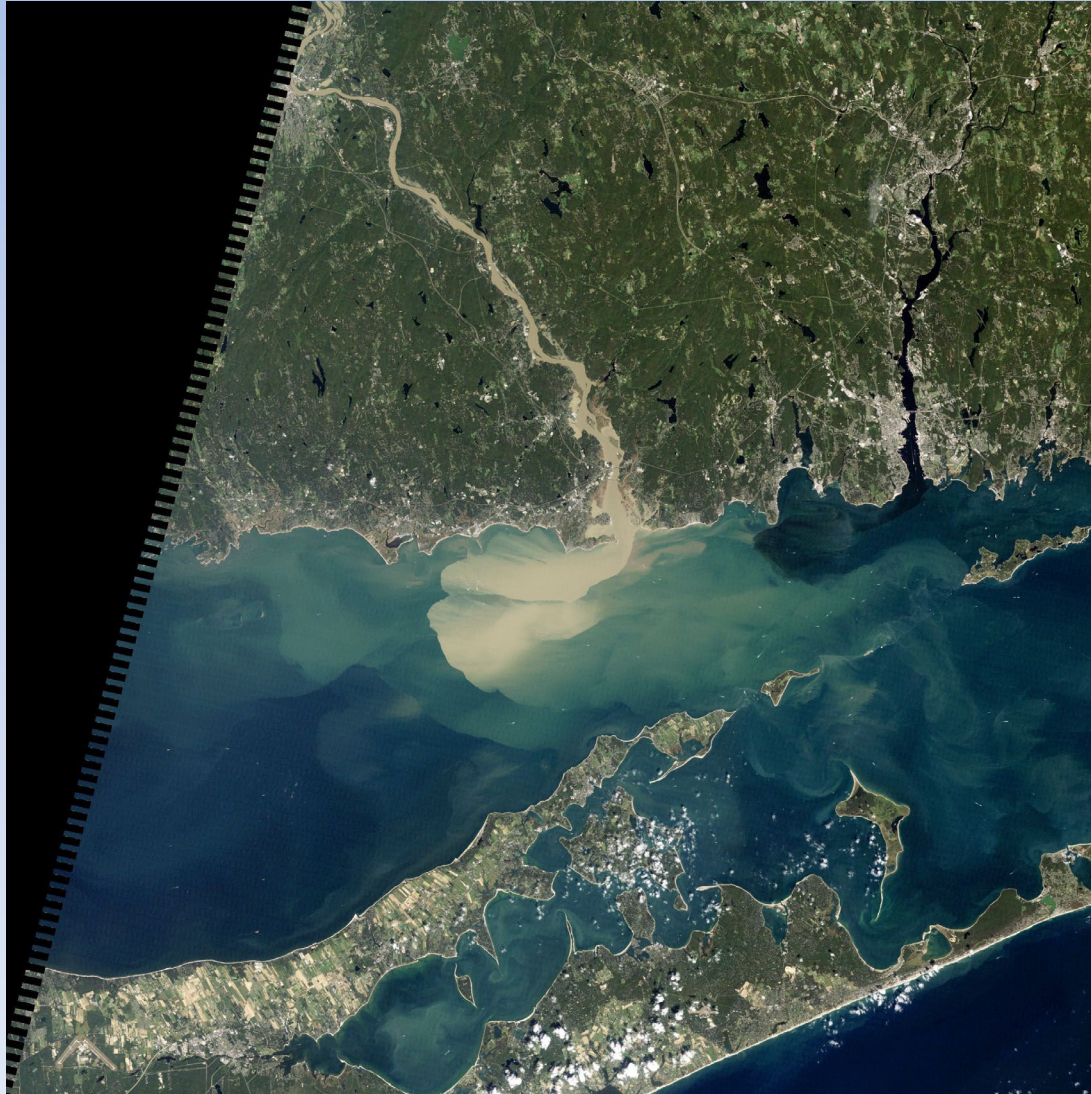
VERMONT DEPARTMENT OF
ENVIRONMENTAL CONSERVATION

WATERSHED
MANAGEMENT DIVISION

What is Sustainable?



Post-Irene Connecticut River Sediment Plume into Long Island



Post-Irene Winooski River Sediment Plume into Lake Champlain



Where do You Live in Our Landscape?

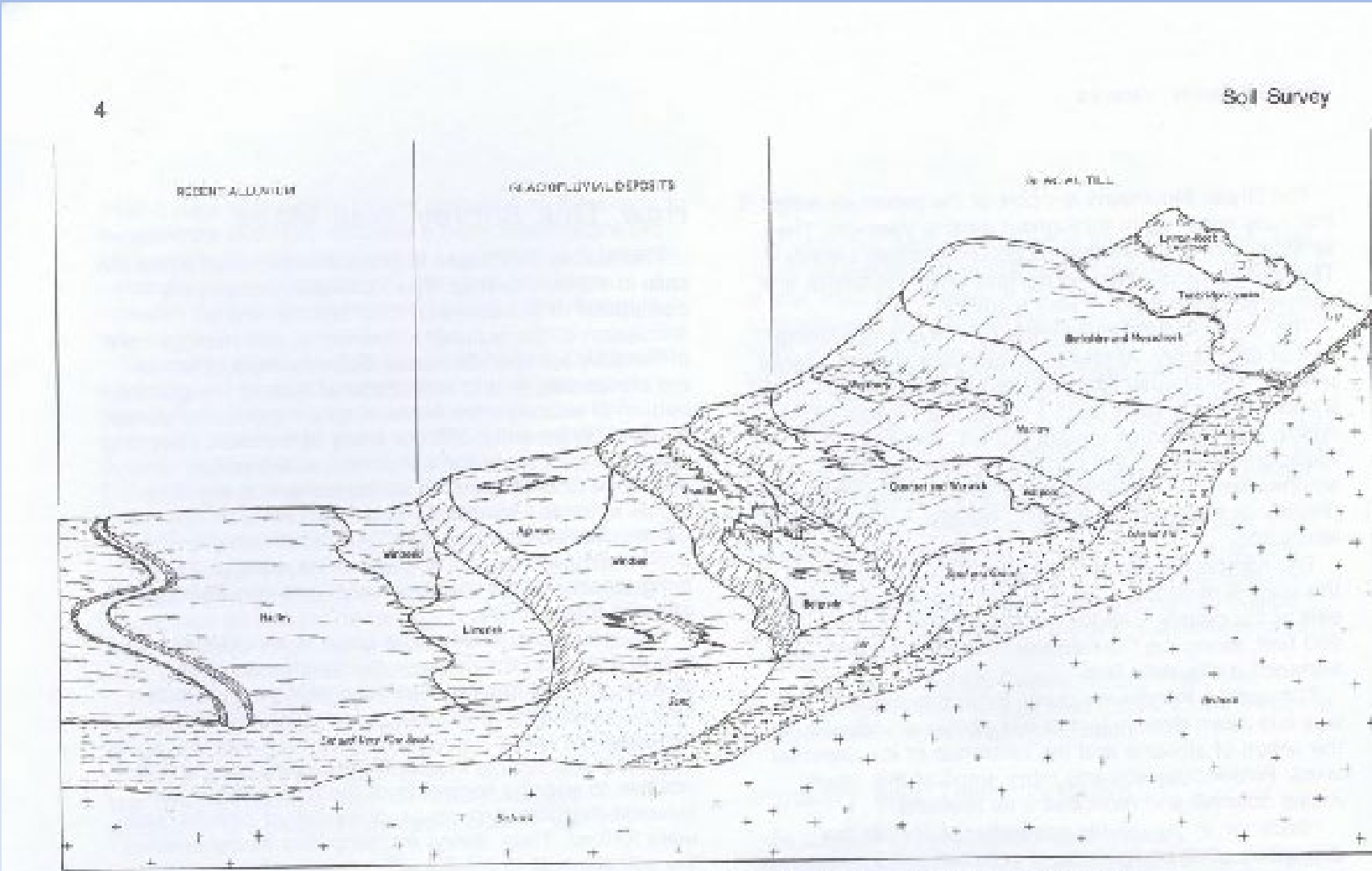
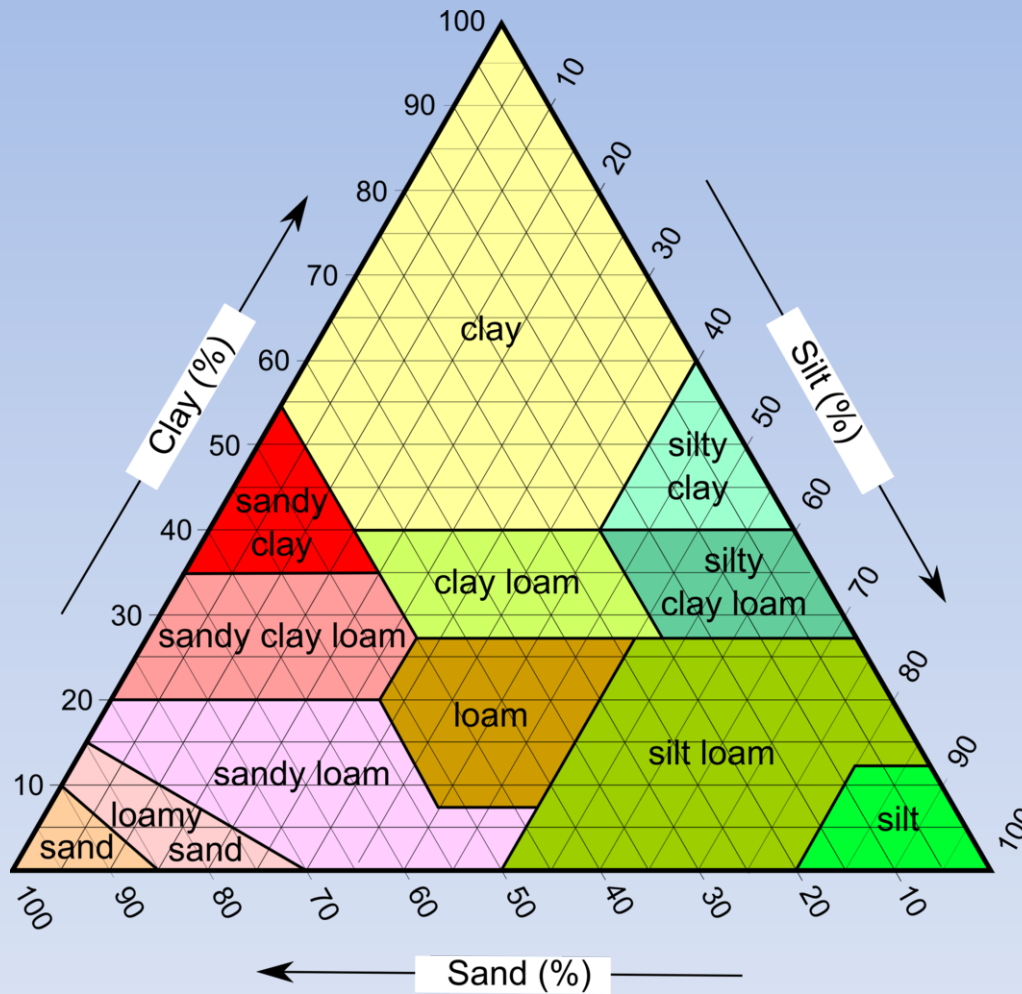


Figure 1.—Typical landscape pattern of several soils and underlying material in Windham County.

Clay versus Silt and Sand



Clay Causes Turbidity

Black River Basin



String
of
Lakes
Share
Issues

Lake Rescue Basin



Many
Small
Stream
Issues

Stream Flows into Lake Rescue

Black River
Great Roaring Brook
Roaring Brook
Money Brook
Buffalo Book
Patch Brook
Many Small Tributaries

ALL CONTRIBUTE SEDIMENT!

Lake Rescue Many Owners



Various Owner Concerns

Multi-Phased Flood Recovery

Response

Recovery

Permanent Repair

Resiliency

Funding

PLANNING PERSPECTIVE!

Suggested Community Strategy

Situation What's the problem to be solved?

Mission What's the strategy to solve the problem?

Execution What Tactics are to be used?

Support What are logistics for people & equipment?

Command What other organizations are needed?

What Can You Do to Help!

What Time Perspective?

Days

Weeks

Months

Years

Decades

PATIENT PERSPECTIVE!

Focus on Our Vermont Community



2023 Lake Rescue Association LRA Annual Meeting Ludlow Town Hall

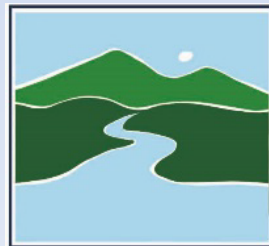
August 5, 2023 Discussion DR4270 Flood

Presented by: Todd Menees, P.E.

River Management Engineer

ANR DEC Rivers Program, Montpelier, VT

(802) 345-3510 todd.menees@vermont.gov



VERMONT DEPARTMENT OF
ENVIRONMENTAL CONSERVATION

WATERSHED
MANAGEMENT DIVISION